

Project Statistics

Site Area : 1,792.1 m² / 0.44 acres

Total GFA : 16,062 m² **Project FSI :** 8.96

Units Breakdown:

1 BR & 1BR+D : 162 units 2 BR & 2BR+D : 96 units

Total Number of Units : 258

Amenity Areas:

Required: 5.6 m² per Unit : 1,445 m²

Provided * : 4.0 m² per Unit : +/- 1,032 m²

Including: Indoor Amenity : 501 m²

Outdoor Amenity : 531 m²

Landscape Area ** : 305.8 m²

Parking Spaces Provided :

200 Cars @ 6 below grade levels

Bicycle Parking Required

Short Term [0.08xUnits] : 21

Long Term [0.7xUnits] : 181

Bicycle Parking Provided

P1 Mezzanine Level : 202 bicycles

Short Term : 21 Bicycles

Long Term : 181 Bicycles

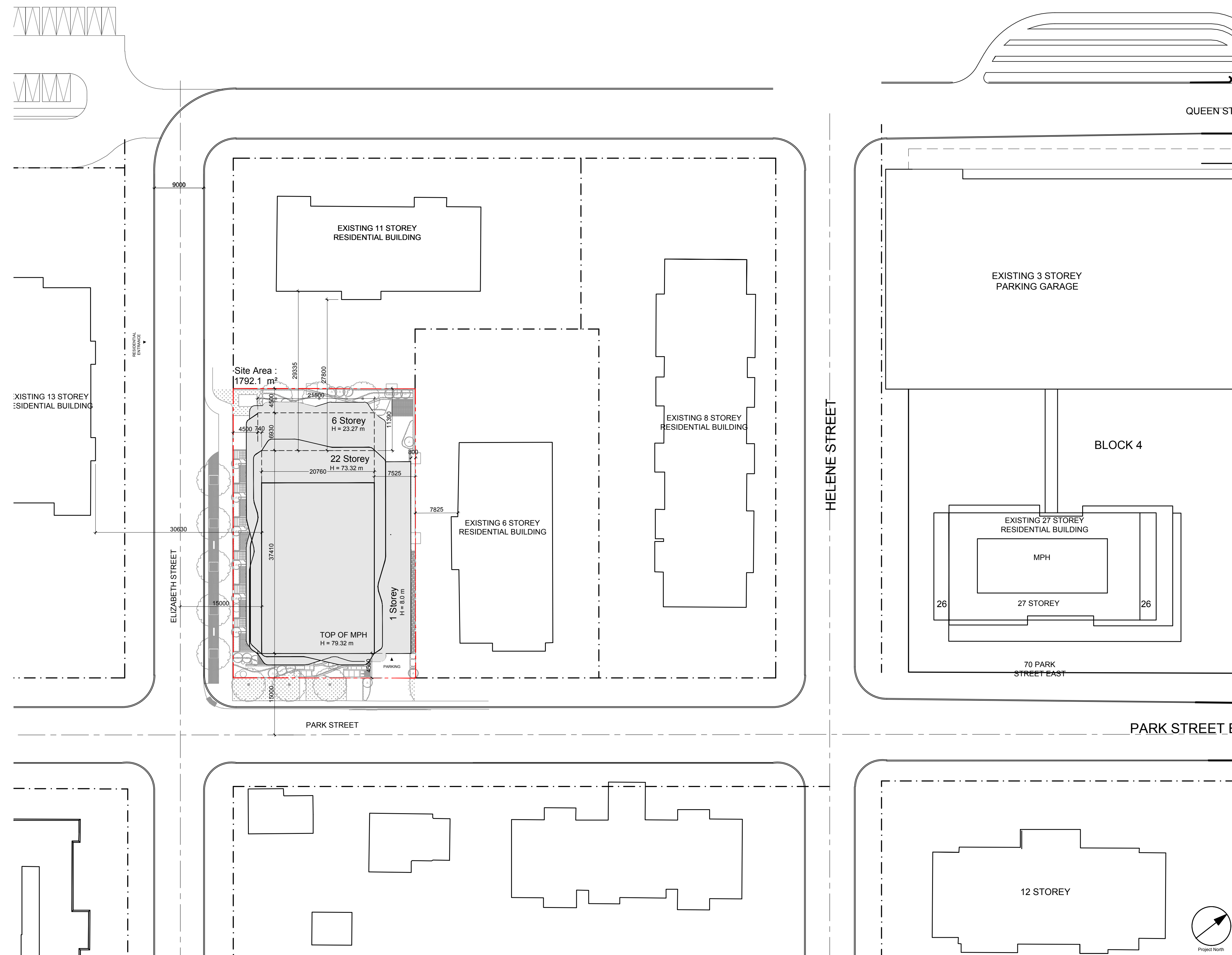
Total of 202

Loading Provided

1 Type 'G' Loading Space

* final numbers for amenity will be calculated through more detailed design as the amenity programming is refined and confirmed

** final numbers for landscaped area will be calculated through detailed design as the locations of transformer pads, etc. are confirmed.



CLIENT

EDENSHAW ELIZABETH DEVELOPMENTS LIMITED



EDENSHAW

129 Lakeshore Rd E.
Suite 201, 2nd Floor
Mississauga, ON

COPYRIGHT

This drawing has been prepared solely for the intended use, thus any reproduction or distribution for any purpose other than authorized by IBI Group is forbidden. Written dimensions shall have precedence over scaled dimensions. Contractors shall verify and be responsible for all dimensions and conditions on the job, and IBI Group shall be informed of any variations from the dimensions and conditions shown on the drawing. Group drawings shall be submitted to IBI Group for general conformance before proceeding with fabrication.

is a member of the IBI Group of companies

| ISSUES | No. | DESCRIPTION | DATE |
|--------|---------------------|-------------|------------|
| 01 | REZONING SUBMISSION | | 2020-05-01 |

ESTABLISHED GRADE CALCULATION AND DIAGRAM

E.G = 81.39

| length no. | begin elev. | end elev. | length | [e.l.1 + e.l.2/2] x L |
|---------------|-------------|-----------|--------------|-----------------------|
| A | 80.24 | 81.86 | 44.34 | 3,594.0 |
| B | 81.86 | 81.96 | 21.59 | 1,768.4 |
| C | 81.96 | 81.96 | 8.98 | 736.0 |
| D | 81.96 | 82.13 | 6.60 | 541.5 |
| E | 82.13 | 81.30 | 35.36 | 2,889.4 |
| F | 81.30 | 80.24 | 28.22 | 2,279.3 |
| total: | | | 145.09 | 11,808.62 |
| EG | | | 81.39 | |



SEAL

PROJECT

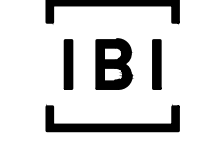
42-46 PARK ST. EAST AND 23 ELIZABETH STREET
PORT CREDIT, MISSISSAUGA, ONTARIO

PROJECT NO: 121643

DRAWN BY: CHECKED BY:

PROJECT MGR: APPROVED BY:

PRIME CONSULTANT



IBI GROUP ARCHITECTS
7th Floor-55 St. Clair Avenue West
Toronto ON M4V 2Y7 Canada
tel 416 596 1930 fax 416 596 0644
ibigroup.com

SHEET TITLE

SITE PLAN AND STATISTICS

PROJECT NO: 121643

DRAWN BY: CHECKED BY:

PROJECT MGR: APPROVED BY:

SHEET NUMBER: **A1.00**

ISSUE

1:400